



# SERIE 017

## PNEUMATIC COUPLINGS PNEUMATISCHE KUPPLUNGEN



SUPER FLOW LINE **SUPERDURCHFLUSS**

**Interchangeability - Kompatibilität**  
SCHRADER NW5, RECTUS 17

**Temperature Range Temperaturbereich**  
-20 °C +100 °C (-4 °F +212 °F)

**Working Pressure - Betriebsdruck**  
0 - 35 bar (0 - 508 PSI)

**Flow capacity - Nennweite**  
NW - 5

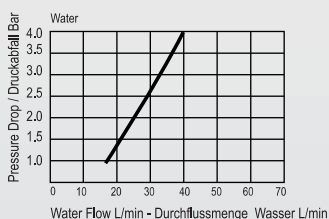
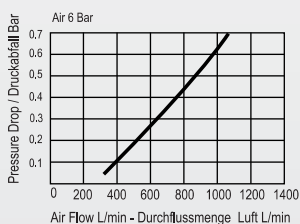
**Option - Optionen**

- K - Chrome plated - verchromt
- N - Nickel plated - vernickelt (standard)
- V - Viton Seal - Viton Dichtung

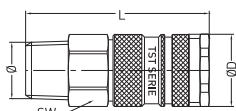
For optional orders please add the symbol of your option end of the order no.  
Bei Optionsbestellungen Kennbuchstabe bitte hinzufügen (Beispiel: 017 EG 13-K-V)

**Material - Material**

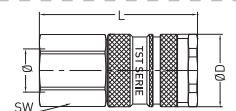
- Coupler Body - Kupplungsgrundkörper : Brass Nickel Plated - Messing Vernickelt
- Back Part - Rückwärtiger : Steel Nickel Plated - Stahl Vernickelt
- Sleeve - Hülse : Steel Nickel Plated - Stahl vernickelt
- Valve - Venti : Zinc Diecasting & Nickel Plated - Zinkdruckguß, verzinkt
- Springs - Federn : Stainless Steel - Edelstahl
- Locking O-Ring-Sprengring : Stainless Steel - Edelstahl
- Balls - Kugeln : Stainless Steel - Edelstahl AISI 420
- Seals - Dichtungen : Nitrile - NBR (Ni)
- Plug - Nippel : Steel Nickel Plated - Stahl vernickelt



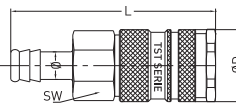
**Couplers and Plugs  
Kupplungen und Nippel**



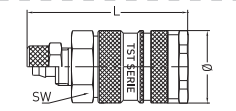
Male Thread Coupling  
Kupplung mit Aussengewinde



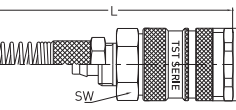
Female Thread Coupling  
Kupplung mit Innengewinde



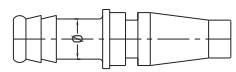
Standard Hose Barb Coupling  
Kupplung mit Schlauchtülle



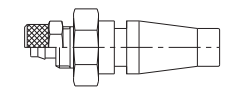
Plastic Hose Coupling  
Kupplung für Kunststoffschlauch



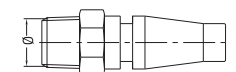
Plastic Hose Couplings With Spring  
Kupplung für Kunststoffschlauch mit Knickschutzfeder



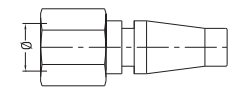
Standard Hose Barb Plugs  
Nippel mit Schlauchtülle



Plastic Hose Plugs  
Nippel für Kunststoffschlauch



Male Thread Plug  
Nippel mit Aussengewinde



Female Thread Plug  
Nippel mit Innengewinde

Connection Anschlüsse	Order No Bestellnr.	SW	L	ØD
BSPT 1/4"	017 RG 13	19	58	23
BSPT 3/8"	017 RG 17	19	58	23
BSPT 1/2"	017 RG 21	22	48	23
BSP 1/4"	017 DG 13	19	53	23
BSP 3/8"	017 DG 17	19	53	23
BSP 1/2"	017 DG 21	24	53	23
6 mm - 1/4"	017 HG 06	19	69	23
8 mm - 5/16"	017 HG 08	19	69	23
9 mm - 5/14"	017 HG 09	19	69	23
10 mm - 3/8"	017 HG 10	19	69	23
13 mm - 1/2"	017 HG 13	19	69	23
6x8 mm - M 12x1	017 PG 06	19	58	23
8x10 mm - M 16x1	017 PG 08	19	58	23
9x12 mm - M 16x	017 PG 09	19	58	23
6x8 mm - M 12x1	017 YG 06	19	155	23
8x10 mm - M 16x1	017 YG 08	19	165	23
9x12 mm - M 16x1	017 YG 09	19	170	23
6 mm - 1/4"	017 HU 06		51	
8 mm - 5/16"	017 HU 08		51	
10 mm - 3/8"	017 HU 10		51	
6x8 mm - M 12x1	017 PU 06		43	
8x10 mm - M 16x1	017 PU 08		46	
9x12 mm - M 16x1	017 PU 09		46	
BSPT 1/8"	017 RU 10	12	38	
BSPT 1/4"	017 RU 13	14	41	
BSP 1/8"	017 DU 10	12	38	
BSP 1/4"	017 DU 13	17	41	
BSP 3/8"	017 DU 17	19	41	
BSPT 1/2"	017 DU 21	24	41	