



SERIE 098 ■

COUPLINGS, MULTICOUPLINGS & MOULD COOLING PRODUCTS

KUPPLUNGEN, MULTIKUPPLUNGEN & KÜHLUNGSELEMENTE FÜR WERKZEUGE



ROBOTIC COUPLINGS ROBOTER KUPPLUNGEN

ROBOTIC TOOL CHANGER COUPLERS  
ROBOTER WERKZERGWECHSELSYSTEM  
KUPPLUNG)

**Working Pressure - Betriebsdruck**

16 Bar - Standard

100 Bar - Stainless Steel - Edelstahl (AISI 303)

**Standard version - Standardversion**

Seal- Dichtungen : Florocarbon (V)

**Material - Material**

Coupler & Plug body -

Kupplungsgrundkörper

& Nippel

: Brass - Messing

Valve - Ventil

: Brass - Messing

Springs - Federn

: Stainless Steel -

Edelstahl

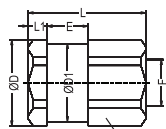
Seals - Dichtungen : Florocarbon (V)

**Applications**

Multi couplers for the mould  
Robotic tool changer couplers.

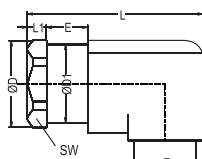
**Anwendungen**

Multikupplungssysteme  
Roboter Werkzeugwechselsystem  
Autokupplung



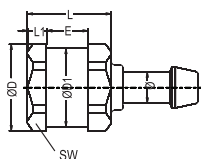
Female Threaded  
Shut-off Coupler  
Kupplung mit Innengewinde

Couplings Kupplung	Body Size Größen	Connection Anschlüsse F / Ø	Order No Bestellnr.	ØD	ØDI	L	LI	E	SW
	08	BSP 3/8"	098.08 DGB 17	29.5	26.7	40.5	6.5	14.2	27
	12	BSP 3/4"	098.12 DGB 26	41.8	37.75	44	6.5	14.2	38



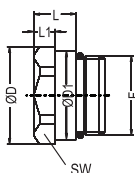
90° Female Threaded  
Shut-off Coupler  
Kupplung mit 90°  
Innengewinde

	08	BSP 3/8"	098.08 DGB 17-90	29.5	26.7	50	6.5	14.2	27
	12	BSP 3/4"	098.12 DGB 26-90	42	42	59	6.3	14	38



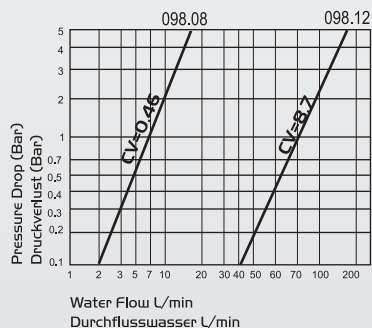
Hose Tail Shut-off Coupler  
Kupplung mit Schlauchtülle

	08	Ø 12	098.08 HGB 12	30	30	31.5	6.3	14	27
	12	Ø 16	098.12 HGB 16	42	42	35	6.3	14	38



Male Threaded  
Shut-off Coupler  
Kupplung mit Aussengewinde

	08	M24x1.5	098.08 EGBM 24	30	30	18.3	13		27
	12	M33x1.5	098.12 EGBM 33	42	42	18.3	13		38



**COUPLINGS, MULTICOUPLINGS & MOULD COOLING PRODUCTS**

KUPPLUNGEN, MULTIKUPPLUNGEN & KÜHLUNGSELEMENTE FÜR WERKZEUGE

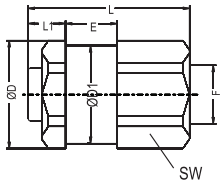
**SERIE 098**

**MANIFOLD & ROBOTIC COUPLINGS ROBOTER MULTIKUPPLUNGEN**



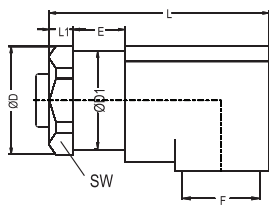
**Nippel Plug**

Body Size Größen	Connection Anschlüsse F / Ø	Order No Bestellnr.	ØD	ØDI	L	LI	E	SW
------------------	-----------------------------	---------------------	----	-----	---	----	---	----



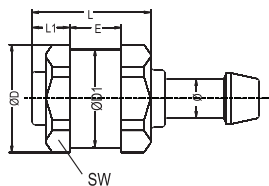
Female Threaded Shut-off Plug  
Nippel mit Innengewinde

08	BSP 3/8"	098.08 DUB 17	30	27	46	11.5	14.2	27
12	BSP 3/4"	098.12 DUB 26	42	38	49.5	11.8	14.2	38



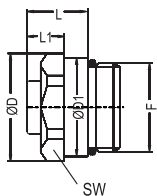
90° Female Threaded Shut-off Plug  
Nippel mit 90° Innengewinde

08	BSP 3/8"	098.08 DUB 17-90	30	27	59	11.5	14	27
12	BSP 3/4"	098.12 DUB 26-90	42	38	63	11.8	14	38



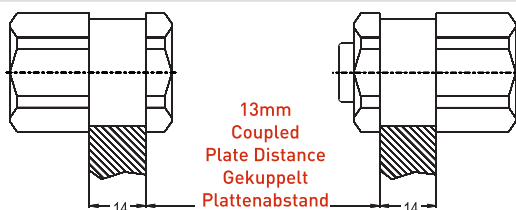
Hose Tail Shut-off Plug  
Nippel mit Schlauchtülle

08	Ø 12	098.08 HUB 12	30	27	36.7	11.5	14	27
12	Ø 16	098.12 HUB 16	42	38	40.5	11.8	14	38



Male Threaded Shut-off Plug  
Nippel mit Aussengewinde

08	M24x1.5	098.08 EUBM 24	30	27	22	11.5		27
12	M33x1.5	098.12 EUBM 33	42	38	22	11.8		38



13mm Coupled Plate Distance  
Gekuppelt Plattenabstand

